

**ATUMATU MKPATA NA MMEFU EGO
(BOJETI) NKE AFO PUKU ABUO NA IRI
ABUO**

GOOMENTI IMO STEETI



BOJETI NWUGHARI IMO NKE MBU

OKWU MMALITE

Nkea bụ nke mbụ kamgbe mbido Imo Steeti, atumatụ nweta ego na mmefu ego (bojetị) ụmụ amaala putara n'ihu ọha. Ọ bụ ihe ańurị na atumatụ nweta ego na mmefu ego ụmụ amaala nke mbụ n'irube isi dika ntuzi aka Ụlọaku Mbaụwa nyere ka-agbaa atumatụ mmefu ego ọbụla n'anwụ n'usoro (Open Budget System - OBS) na-eme n'oge ezigbo ọchịchị nke His Excellency, the Distinguished Senator Hope Uzodimma, Gọvanọ Imo Steeti.

Ebum n'uche atumatụ nweta ego na mmefu ego nke ụmụ amaala bụ ka ụmụ amaala sonye na mkpebi gbasara nhazi ntinye arumarụ n'ime obodo ha dị iche iche. Site n' ụzọ dị otua, ụmụ amaala ga-eburu ọrụ ndia n'isi ma ghotakwa uru arumarụ goomenti bara dika mbo nkwado akụ na ụba nke ha.

Bojetị ụmụ amaala bụkwazị ngwa ọrụ Ụlọaku Mbaụwa (World Bank) gwadoro I ji wee hụ na Steeti ọbụla na Naijiria sonyere n'atumatụ ga-eweta idoanya, iza ajụjụ nke ọha na eze nakwazị uru dị na nchedo ọdinihu nke akporo n'olu bekee, State Financial Transparency, Accountability, and Sustainability (SFTAS). Ọ bụ nkwenye anyị n'atumatụ bojetị ụmụ amaala ga-aba uru ma bụrụkwa ihe ụmụ amaala Imo ga-anabata maka iso mmefu ego ọha na eze.

Ihe ndi Bojetị Ụmụ amaala metugara

aka bụ ndia: ụdị bojetị di iche iche, nkowaokwu bojetị, ụzọ esi eme bojetị, mwere bojetị, nha mmefu ego anabatara, etu goomenti ga-esi nweta ego, etu goomenti ga-esi mefuo ego, ego enyemaka na onyinye, mmefu ego nke mgbedum, na mmefu ego nke arumarụ maka afọ a.

Na mgbakwunye, ego ebu n'uche maka arumarụ goomenti na-ebe arumarụ ndia ga-adị bụkwazị mpaghara ahụ bojetị ụmụ amaala na mmeju ebum n'uche nke igba mmefu ego goomenti n'anwụ, dika usoro nhazi igba mmefu ego n'anwụ siri di (Open Budget System).

N'ikpeazu, ọ bụ site n'obi umeala ka mụnwaa, dika ọnye di nsopurụ komishona na-ahụ maka ngalaba ozi mmefu ego, ime atumatụ akunuba, na onu ogugu (Ministry of Budget, Economic Planning and Statistics) jiri na-ekwuputa afọ ojuju m, nyere ndi ọrụ niile nọ na ngalaba ozi mmefu ego, ime atumatụ akunuba, na onu ogugu maka imejuputa ihe ndi Ụlọaku Mbaụwa chorọ nakwazị maka igba usoro mmefu ego (bojetị) ụmụ amaala n'anwụ kamgbe Imo Steeti bidoro.

Hon. C. C. Osuala, PhD.

Ngalaba ozi mmefu ego, ime atumatụ akunuba, na onu ogugu (Ministry of Budget, Economic Planning and Statistics), Imo Steeti.

OKWU NDUBATA

Oge na ego bụ akụ ana-achọ achọ nyere ọnye ọbụla, gọọmenti, nakwazị ọgbakọ dī iche iche. Ime atụmatụ bụ ihe e ji etinye akụ ndịa n'orụ ọfuma na-enyeghị ọhere maka ịla akụ n'iyi nakwazị nweta ihe atụrụ anya site na akụ ndịa. Etu osila dī, ime atụmatụ sọsọ ezughị oke.

Njikwa dikwuazị mkpa iji wee hụ n'ezie na-emepụtara atụmatụ niile. N'ihī nkea, bojetī bụ ngwa ọrụ na-enye aka ịchikwa atụmatụ na ijikwa etu esi emefu akụ na-adighị adj.

Bojetī bụ isi sekpu ntī na achikwa ihe omume nke gọọmenti ma burukwa atụmatụ e deturu edetu nke na-akwa ebun n'uche gọọmenti gbasara ego maka ọdinihu dika o siri metuta ego ga-abata n'akpa gọọmenti (nweta) na nke ga-apu apu (mmefu).

Etu osila dī, iji were mee ka ndī bi n'ime ime obodo nwee mmetuta nke gọọmenti okpuru ọchichī, bojetī umu amaala bụ ihe ekwesiri imejuputa ma bukwaazī ihe akwara na-nghota umu amaala, ebe obu maka ha ka-ajiri hibe bojetī.

Bojetī umu amaala chawaputara dika akwukwo ikikere gọọmenti meputara soso maka oha n eze. N'ihī nkea, o na-enyere umu amaala aka ighota etu

gọọmenti siri enweta mana emefu akụ, nakwazi inye aka kwalite mmekorita n'etiti ndi umu amaala na ndi ochichi ha maka iruputa ezigbo ọrụ na mmepe obodo.

Bojetī umu amaala na-adabere na bojetī steeti nabatara kwa afọ ebe ebun n'uche ya gunyere igosi nkwa ihe ọgwugwa bojetī steeti n'uzo dī mfe umu amaala ga-esi ghota ya.

I ji nweta uru kachasi na bojetī umu amaala, o kwesiri idi mfe nghota, doo anya, gbasaa ofuma, ma dikwa nso ebe ọnye ọbụla nwere ike i nweta ya. Ozokwa, maka inweta ebun n'uche atụmatụ SFTAS, ekwesiri ibiputa bojetī umu amaala na webusaiti gọọmenti na ntaneti maka irute oha na eze aka.

WHAT IS A BUDGET? (GINI BU BOJETI?)

Bojetī bụ ndeko atụmatụ mkpata na mmefu ego. O bụ atụmatụ maka ichekwa na mmefu maka ọdinihu. E nwekwara ike kwaa bojetī dika ndeko toro-atọ nke mmefu, mkpata na mmefu ego nke arumarū n'oge amaputara maka ihe ndia kpomkwem.

Ana-akwadebe ma na-anabatakwa bojetī tupu oge bojetī ahū ga-egbo mkpa eruo. O nwekwara ike igosi ego ga-abata, mmefu ego na ego aga etinye

OKWU NDUBATA

n'orụ. O na-akọwa ihe gaje ime n'odinihu dika ego ole ana-atu anya na goomenti ga-enweta, ego onyinye, na nke obibi tinyere nkowa toro-atọ nke ihe omume na arumarụ nke goomenti turu atumatu maka ha iji mefuo ego oha na eze maka odimma mmadu niile.

GINI BU EBUM N'UCHE KACHA MKPAMA KA BOJETI?

Otu. Iji jikwaa akụ na usoro imejuputa ihe nkwa goomenti.

Abuo. Maka ima-amuma gbasara arumaru nke odinihu.

Atọ. O bu ngwa oru di oke mkpa maka mkpebi, nlekota akụ na uba, nakwazi ima-amuma mkpata na mmefu.

UDI BOJETI DI ICHE ICHE

BOJETI NHARA

Nkea putara mgbe mwere mmefu ego goomenti na mwere ego goomenti ga-enweta ha nhata n'afọ aturu aka.

O bu bojeti nke mmefu ego anaghi akari ego goomenti ga-enweta. Udidi bojeti a na-enyere goomenti aka ikwu chim n'ihe gbasara akụ na uba ma obu ru na-emejuputa ya nke oma nakwazi enye aka ezere mmefu ego na-abaghi uru. Mana ndoghachi azu so ya bu na o

na-egbochi goomenti imefu ego na odimma ndi mmadu tinyere na o naghi eweta osisa nyere ufodu nsogbu dika enweghi oru.

BOJETI NJUPUTA

Nkea putara mgbe ego a turu anya na goomenti ga-enweta site na utu isi, utu na-eso ihe atubatara atubata, wee diri gaba gafere mwere mmefu ego goomenti n'afọ a turu aka. Udi bojeti nkea bu nke kasi mma n'oge onu-oriri iji mee ka mkpokota ochuchọ ngwaahia.

Note (Ndumodu)

Onu-oriri n'uche izugbe putara mgbago onu ahia na.

BOJETI MPERI

Nkea putara mgbe enwere mmefu ego goomenti gafere ego a turu anya na goomenti ga-enweta n'afọ a turu aka. Ya bu, mmefu ego gafere ikpata ego. Goomenti na-ejikari ego oha nkwughachi ya di anya bekee kporo bond maobu ego mbite oha were mejuputa bojeti mperi.

O nwere ike ibia site n'akpa ndi nzuko jikoro mba uwa di iche iche, ndi oji ego achu ego, ndi ahia ego, maobu Ulqaku. GINI BU BOJETI UMU AMAALA?

OKWU NDUBATA

Bojetị ụmụ amaala na-akwalite nnukwu nghọta gbasara etu esi ejikwa ego ọha na eze. Ya bụ, ọ bụ ọnụ ụzọ na-eduba n'ihe ọmụma ndị ọzọ. Bojetị ụmụ amaala bụ bojetị nke na-enyere nwa-amaala aka ighọta etu goṅmenti siri enweta ma na-emefu ego. Ya mere, ọ kwesiri ịdị mfe karịa, ghara inwe ihe mgbagwoju anya; obukwa ụdị bojetị goṅmenti ana-ewepụta ọsọsọ na nke ana-etinye na ihe omume dị mkpa maka ọha na eze.

UMU BOJETỊ NWA-AMAALA BARA

Bojetị nmu amaala dị mkpa maka ọ na-enyere ụmụ-amaala aka ighọta mmefu ego goṅmenti dika osiri metuta ndu ha kwa ubochi, bido na iji utu isi ha wee gboo mkpa ọha na eze nke ụmụ amaala niile. Ọ bukwuzi ọnụ ụzọ na-eduba n'ihe ọmụma ndi ọzọ.

Ebum n'uche Bojeti Umuamala abughi nnochi akwukwo bojetị nke zuru ezu, kama ha dī mkpa maka ikowara umu-

amaala na ndi nyocha ochichi ihe ha kwesiri ima iji sonye dika ndi maara ihe ekwe na-aku ma mee ka goṅmenti zaa ajuju gbarasa njikwa ego ọha na eze.

Ọzokwa, goṅmenti na-agba mbọ ime ka ụmụ-amaala nweta nghọta toro-atọ etu dī iche iche bojetị si emetuta ndu ha; na-egosi ihe ọmụma nke bojetị n'udị ga-eru ọnye ọbula aka karịa akwukwo bojetị zuru ezu ka ọha were ghọta ihe omume na ihe arumaru goṅmenti. Otua, ụmụ-amaala ga-ama ihe mgbochi goṅmenti na-enwe na mmefu ego, ma n'usoro mkpata ego.

NKỌWAOKWU BOJETỊ

Mkpokọta bojetị mmefu

Nkea pụtara mkpokọta ego bojetị maka afọ atụrụ aka. Ọ bụ nchịkọta nke mmefu ugboro ugboro na nke mmefu ihe arụmarụ dika ụlọ ndị ọmebe iwu siri nabata ya tinyere mbinye aka nke Gọvanọ. Ọ bụ etu gọọmentị si kwadoo mmefu ego, n'aha ụmụ-amaala, etu akụ dī siri hadebe. Mmefu gọọmentị dī ụzọ abụọ: mmefu nke ugboro ugboro na mmefu nke ihe arụmarụ.

Ego Ga-abata

Nkea bụ mkpokọta ego nile nke gọọmentị nwere olileanya na ọ ga-enweta n'afọ ahụ site na ụtụ isi ugboro ugboro, ụtụ, ụgwọ; n'ụzọ dī mfe, nkea bụ ego a natara n'aha ndī ụmụ-amaala. Steeti nile dī n'ime Naijiria na-enweta oke ego ha site nke gọọmentị etiti natara nke gụnyere ego mmanụ, ụtụ ndī ụlọ ọrụ na-atụ, ụtụ na-eso ngwaahia, na ụtụ na-eso ihe ndī atụbatara site na mba ofesi.

Ihe a na-akpọ ndia bụ oke dī n'iwu, ụtụ na-eso ngwaahia na ego ga-abata ndī ọzọ dī n'iwu na-aga na steeti nile site n'akpa dī n'etiti. Ego nweta nke steeti nile ji aka ha nweta na edobekwa maka igbo mkpa ka a na-akpọ ego osiniime (IGR); ndia gụnyere ụtụ isi na-eso ihe ọnye rụtara, ụtụ okporo ụzọ, ụtụ, ụtụ

na-eso inwe ala/ụlọ, dīrī gawazia.

Bojetị Mperi

Nkea bụ ndiiche dī n'ihe gọọmentị na-atụ anya imefu na nke ọ nwere ike inweta. Mperi na-adī mgbe mmefu ego dī ọnụ karịa ọnụ ego aga-akpata na nke onyinye. Mkpokọta ego bojetị bụ nchịkọta ego niile gọọmentị na-atụ anya inweta site na mbite/ego obibi (nke ụlọ na nke mpuga/ofesi), ire akụ gọọmentị, na ụzọ ndī ọzọ esi akwado bojetị mperi.

Ego Onyinye

Onyinye bụ otu ụzọ gọọmentị si enweta ego maka mmejuputa echiche na ihe arụmarụ nke ga-eweta akurungwa na-enyere ndū ọha aka, kwalite ụba obodo, ma wetakwa izugbe ọdīmma ọha. Onyinye nwere ike site mba ofesi maọbụ n'ụlọ. A na-enyekarī ego onyinye maka ihe arụmarụ akporo aha nakwazī igwe mmefu. Ego onyinye abughī mbite/ego obibi, anaghī akwughachi ya azū ma ejiri ya rụchaa ihe arụmarụ maọbụ igwe arụmarụ akporo aha na ya bụ onyinye.

Ego Mbinye

Ụzọ ọzọ gọọmentị si enweta ego maka bojetị bụ ego mbinye. Gọọmentị na-ebite ego iji mejuputa bojetị kwa afọ ọkacha mgbe ego nweta na onyinye agaghī ezu oke imezu mmefu nile dī na

NKỌWAOKWU BOJETỊ

bojetị. Ego mbinye nwere ike isi n'ụlọ maọbụ mba ofesi. Ego mbinye nwekwara ike ịbụ maka ihe arụmarụ akpọrọ aha maọbụkwanụ maka mmejuputa izugbe mmefu bojetị.

Gini mere goomenti ji ebite ego? Mgbe goomenti na-atụ anya imefu ego karịrị nke ọ na-atụ anya inweta dika ikpata ego na onyinye, bojetị ahụ bụ nke mperi.

Mgbe goomenti bu n'uche mmefu ego di nta kariya nke ha bu n'uche inweta na mkpata na onyinye, bojetị ahụ bụ nke njuputa. Bojetị ha nhata bụ bojetị nke ebe mkpokota ego ga-abata na nke a ga-emefu kuoro onụ n'afọ.

Mgbe ana-atụ anya na bojetị ga-enwe mperi, goomenti ga-agba mbọ mejuputa bojetị mperi ahụ. Ọ ga-eme nkea site na mbite ego maọbụ ire ụba goomenti. Ego mbite nwere ike si na ogbakọ mbaụwa na-ahụ maka ego, goomenti etiti maọbụ site n'ahia ego.

Mmefu ego nke ugboro ugboro

Nkea na-akwọwa maka ụgwọ ndị goomenti na-akwụ ugboro ugboro: ụgwọ ọrụ na ụgwọ ọnwá nke ndị ọrụ bekee; ụgwọ eji achikọta ọrụ goomenti (ụgwọ ọkụ eletrik, ego mmanụ eji amụ ọkụ eletrik); ụgwọ na-eso mkpokota

akpa ego goomenti; ego nyeeffe (na-agara goomenti okpuru ọchịchị, maka omumaatu); omurụ nwa di n'ego ebite ebite; na ndi ozo (ego enyemaka, maka omumaatu).

Ugwọ ndi ọrụ goomenti

Gunyere ụgwọ ọnwá, ego ntụkwasi na ego odimma ndi ozo goomenti na-akwụ ndi ọrụ ya (ndi ọrụ bekee).

Ugwọ eji achikota ọrụ goomenti

Ndịa bụ mmefu na-abia kwa mgbe kwa mgbe na-abughị ụgwọ ana-akwụ ndi ọrụ goomenti maobu ndi ọrụ goomenti ndi ozo, gunyere onu ego ụgwọ na-agara ndi ahia. Ana-akwụ ụgwọ gbasara nchikota ọrụ goomenti oge nile. Omumaatu gunyere ego ụgwọ ọkụ eletrik, ego ụgwọ mmiri, ego mmanụ eji amụ ọkụ eletrik, maobu ego njem emegasiri n'oru, nke ndi ọrụ bekee.

Ego ihe arumarụ

Bu ego goomenti na-emefu inweta maobu iwulite ihe onwunwe na-enyere ndu oha aka, ala maobu aku ndi anaghi ahụ anya. Mmefu ego ihe arumarụ putara ego ole goomenti na-etinye n'arumarụ dika iru ulo akwukwo, ulo ogwu, uzọ bekee, maobu izuta akorongwa nche. Oge ufodu, ana-akpo mmefu arumarụ "Capex" n'olu bekee nke putara mmefu arumarụ.

NKỌWAOKWU BỌJETỊ

Oke mpaghara ọchịchị

Ana-enye alaka ije ozi dị iche iche, ngalaba, na ụlọ ọrụ gọọmenti (MDAs) oke mmefu ego. Nke ọbụla ga-enwe bọjetị ugboro ugboro na nke ihe arụmarụ anabatara dịka nkebi nke mkpokọta bọjetị nile nke gọọmenti steeti nabatara maka ime ihe ọmụme ụbọchị ya, yana imejupụta ihe arụmarụ so ha n'otu n'otu.

Ọ bụ ihe kwesiri ka steeti nile tinye oke na-agara alaka ije ozi, mpaghara na ụlọ ọrụ gọọmenti n'ihe nlereanya maọbụ opekampe, ndị MDA kacha emefu ego.

Usoro ndụ bọjetị

Usoro ndụ bọjetị pụtara oge maọbụ ndụ bọjetị bido mgbe emere bọjetị ruo mgbe atulere/enyochara ya. Enwere nkebi ndụ bọjetị anọ, ya bụ:

- i. Nkwadebe na ngosi nye ndị ụlọ ọmbebe iwu.
- ii. Nnabata nke ndị ụlọ ọmbebe iwu.
- iii. Mmejupụta
- Iv. Ntule/Nlele agam n'ihu kwa afọ.

USORO ESI NA-AKWADEBE BOJETI

Usoro bojetị na-akwara usoro gọọmentị si emepụta ma na-anabatakwara bojetị. Usoro a dị etua;

- a. Nkwadebe mmegharị ihe gbasara akụ na ego obodo (EFU), akwụkwọ atụmatụ gbasara ego obodo (FSP), na nkwupụta amụma bojetị (BPS).
- b. Ọgbakọ nke ndị ọkacha mara/metụta tupu emewe bojetị.
- c. Ịkpọ oku degara ndị ngalaba ụlọ ozi (MDAs) gọọmentị dị iche iche make ntinye echiche ha.
- d. Kpụta otu bojetị ga-ahụ maka inyocha ihe ndị agatinye.
- e. Ndekọ ebun n'uche niile si ngalaba ụlọ ozi dị iche iche laghachi.
- f. Ọgbakọ maka ntugharị uche n'etiti ndị otu bojetị na ndị ụlọ ozi gọọmentị.
- g. Ntule ihe ndị ụlọ ozi gọọmentị tinyegasiri.
- h. Nkwadebe akwụkwọ bojetị maka nnabata.
- i. Ngosi bojetị nke aga-anabata nye ndị isi ọchịchị gọọmentị steeti.
- j. Ngosi bojetị aga-anabata nye ụlọ ndị ọmebe iwu maka nnabata bụ nke Gọvanọ Steeti bụ ya na-eme.
- k. Nnabata nke ndị ụlọ ọmebe iwu.
- l. Mbinye aka maọbụ akara nnabata nke Gọvanọ.

Mmegharị ihe gbasara akụ na ego obodo (EFU), akwụkwọ atụmatụ gbasara ego obodo (FSP), na nkwupụta amụma bojetị (BPS) na-atụle ka uto akụ siri dobe imi na ọny n'oge dị nso na mba ụwa, Naijiria, tinyere Steeti biazie tūlee etu nchoputa ha ga-esi metuta ego obodo.

Ọ na-egosi isi sekpu ntị njirimara ọzọ akụ na ụba gụnyere mmanụ. Ọ na-enyocha etu mmejuputa bojetị nke afọ gara aga siri dị nakwazị mputara nchoputa so ya maka afọ nke na-aga kitaa na bojetị afọ ọdinihu.

MWERE BOJETI

Isi mwere bojetị nke afọ puku abụọ na iri abụọ

Bojetị nke afọ puku abụọ na iri abụọ gbadoro ụkwụ na mwere ndja:



Okpokoro ọkara oge mmefu nke gọmentị etiti (FGN's MTEF)



Mkpebi gọmentị etiti iwere ọnụ ahịa mmanụ na mgbubiri USD iri ise na asaa maka otu mbọ mmanụ, mwere imeputa nde abụọ na puku iri na asatọ mbọ mmanụ kwa ụbọchị na mgbanwe ọnụ ego nari naira atọ na ise maka otu USD maka afọ puku abụọ na iri abụọ.



Otuto obodo Naijiria nke 2.93 percent n'afọ puku abụọ na iri abụọ, nke ihe na-akwalite ya na-abụghị mmanụ, dịka ụzọ ndị ọzọ esi akpata akụ na ụba na-abawanye, tinyekwara nkwalite ọdịmma gburugburu azụmaahịa. Etu osila di, ana-atụ anya na ọnụ-oriri ga-eji nwa nkenke ihe gafee ọnụọgụ ndị di sọ otu.



Iwelite ego ụtu na-eso ọrụ maọbụ ngwọ-ahia nke bekee kpọrọ Value Added Tax site na percent ise gaa na percent asaa na ọkara etu osi di, bojetị afọ puku abụọ na iri abụọ gbadoro ụkwụ na ọnụego ụtu ọhuru a. Iwu ụtu a ewepụla ihe gbasara ogwụ ahụ ike, agum akwụkwọ, na ngwa ahia ndi di oke mkpa, ndi mwepu ha ka na-abawanye n'okpuru Iwu gbasara ego nke afọ puku abụọ, iri na iteghete gara aga.

OKPOKORO EGO OBODO

ego niile bụ na Naira

197.8bn

Ijeri nnari na iri itoolu
na asaa na nde nnari asato.

Nha Bojetị Akwadoro
Maka Afọ Puku Abụọ Na Iri Abụọ

18.9bn | Ijeri iri na asato
na nde nnari itoolu
Mperi

178.8bn

Ijeri nnari na iri asaa na asato
na nde nnari asato

Mkpokọta ego ga-abata

EBEE KA EGO GA-ESI PUṬA?)

ego niile bụ na Naira



178.8bn

Ijeri nnarị na iri aṣaa na asatọ
na nde nnarị asatọ

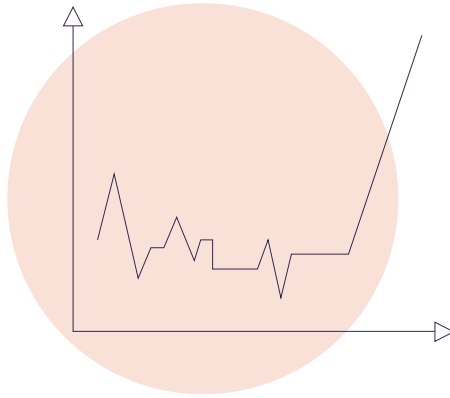
Mkpokọta ego ga-abata

36.6bn | Ijeri iri atọ na isii,
na nde nnarị isii
Ego odiniime

103.9bn | Ijeri nnarị na atọ na
nde nnarị itoolu
Ego mpuga

38.3bn | Ijeri iri atọ na asatọ
na nde nnarị atọ
Ego nnata





MGBARI EGO GA-ABATA



EGO ODINIIME

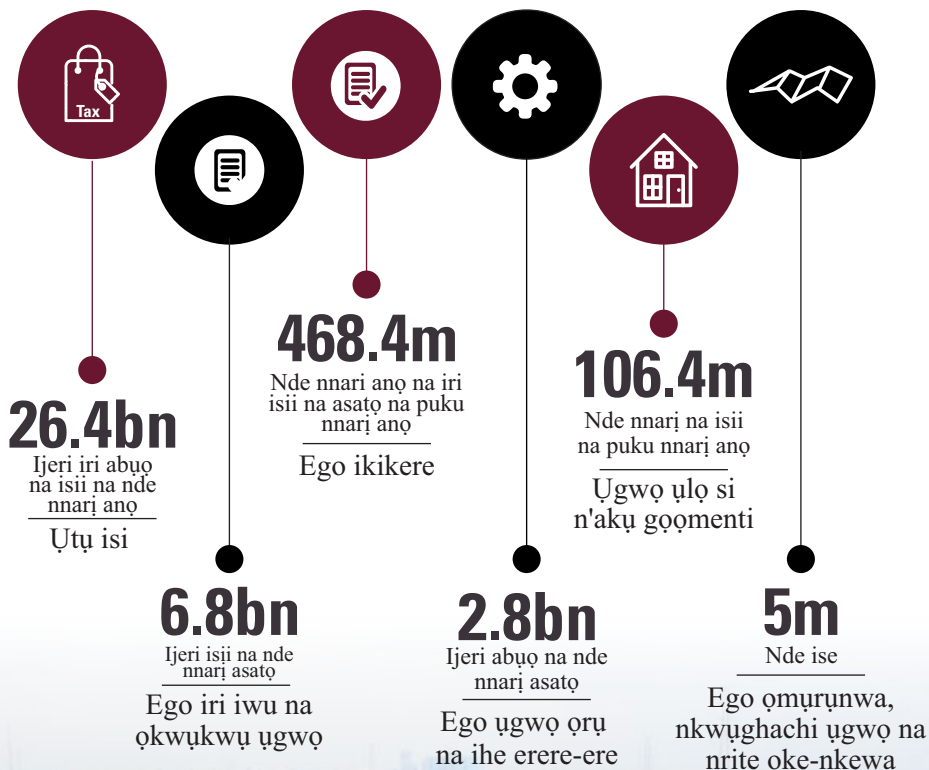
ego niile bụ na Naira



36.7bn

Ijeri iri atọ na isii,
na nde nnarị isii

Mkpokọta ego odiniime



EGO MPUGA

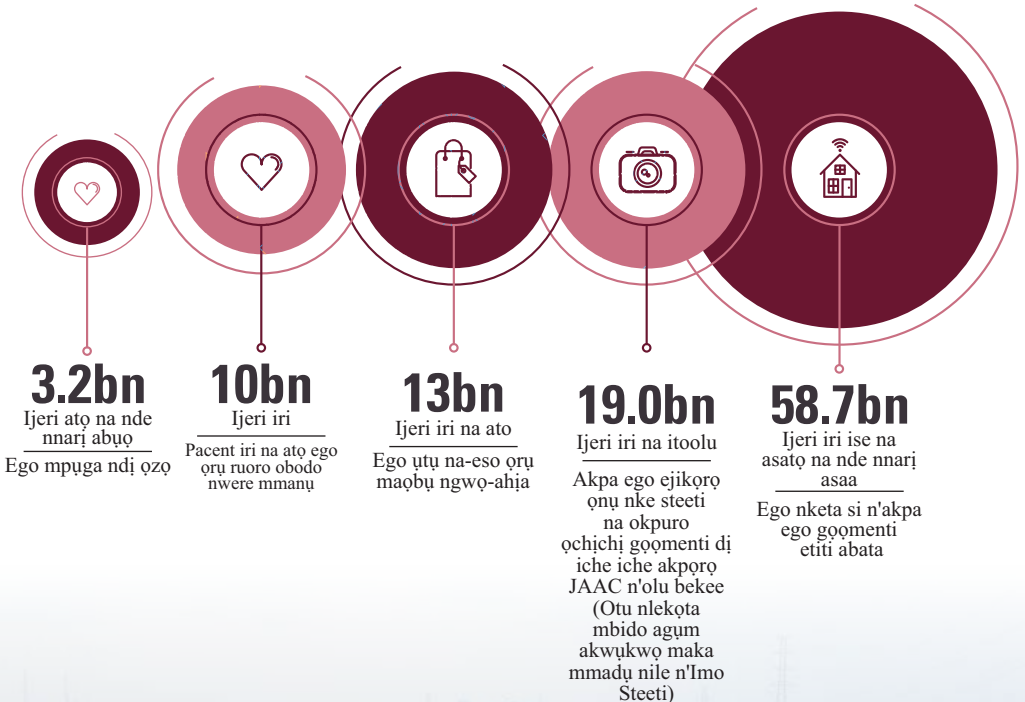
ego niile bu na Naira



103.9bn

Ijeri nnari na ato
na nde nnari itoolu

Mkpokota ego mpuga



EGO NNATA

Ego niile bụ na Naira



38.3bn

Ijeri iri atọ na asatọ na nde nnarị atọ

Mkpokọta ego nnata

37.4bn

Ijeri iri atọ na asaa
na nde nnarị anọ

Ndị nrụkọrụ
mmepe obodo



952.5m

Nde nnarị itoolu na
iri ise na abụọ na
puku nnarị ise

Ego onyinye



MGBARI EGO NNATA



Ndị Nrukoọrụ MMEPE Obodo

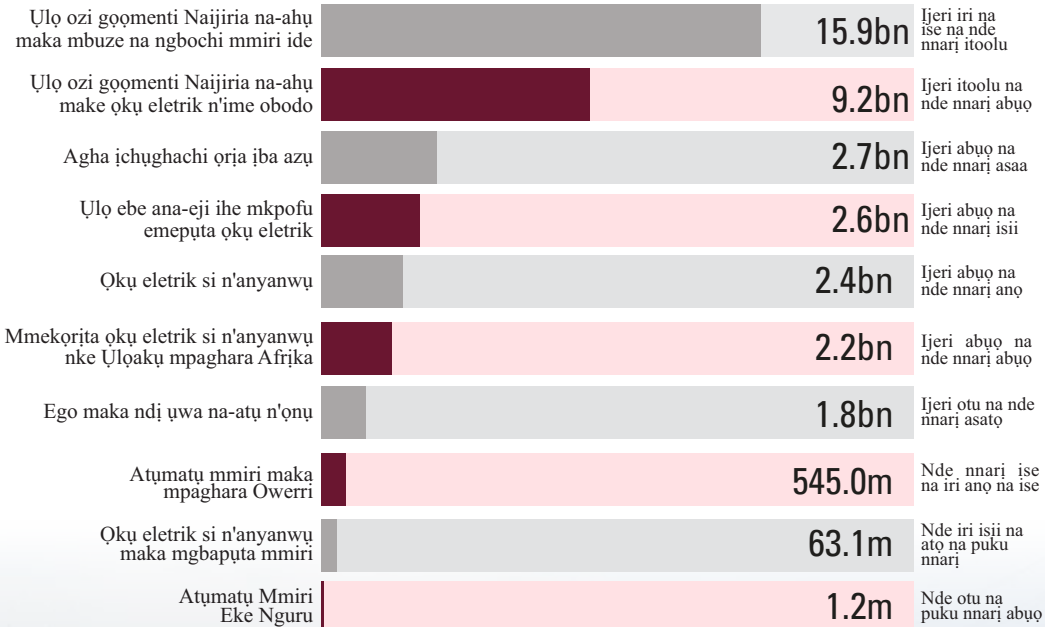
Ego niile bụ na Naira



37.4bn

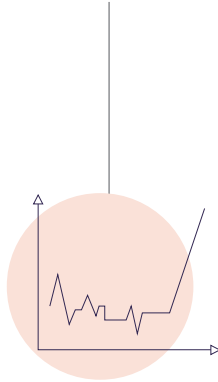
Ijeri iri atọ na asaa na nde nnarị anọ

Mkpokọta



EGO ONYINYE

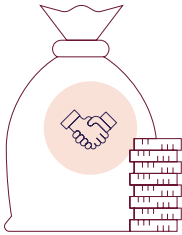
Ego niile bụ na Naira



925.5m

Nde nnaị itoolu na iri ise na abụọ
na puku nnaị ise

Mkpokọta ego onyinye



HIV/AIDS
457.5m



NATIONAL
PROGRAM ON
IMMUNIZATION
300m



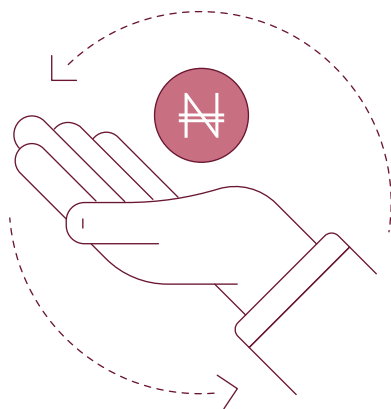
MATERNAL
AND CHILD
NUTRITION
170m



SAFE
MOTHERHOOD
25m

EGO MBITE ODINIIME

Ego niile bụ na Naira



18.9bn

Ijeri iri na asatọ na nde nnaṛi itoolu

Ego mbite ga-esi Uḷoaku azumahija
rute goṛmenti Imo Steeti aka

EBEE KA EGO A NA-ABANYE?

Ego niile bụ na Naira

197.8bn

Ijeri nnarị na iri itoolu na nde nnarị asatọ

Mkpokọta mmefu ego



Mmefu ego nke ugboro ugboro



Mmefu ego nke ihe arụmarụ

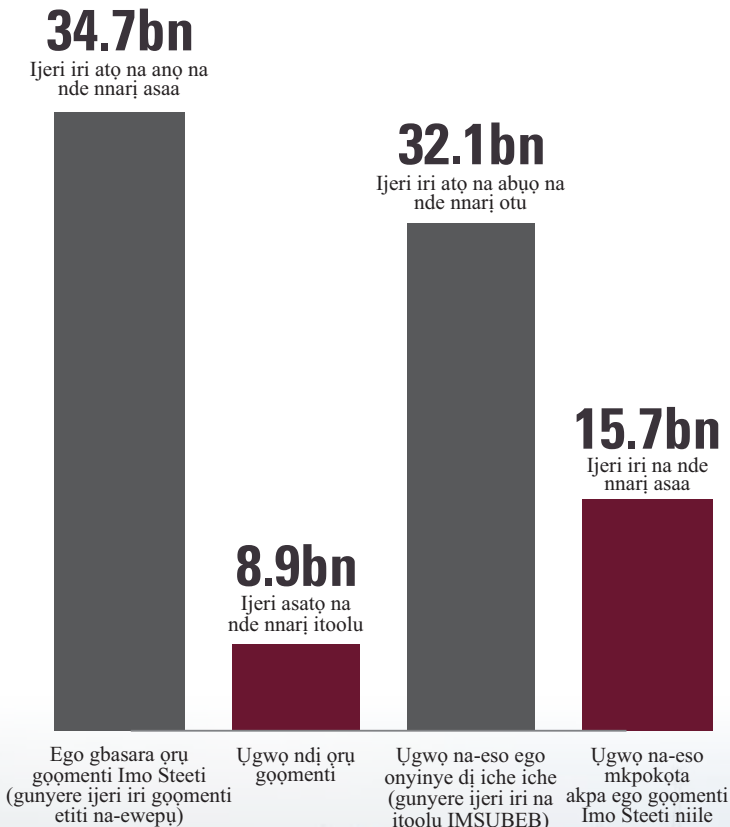
MMEFU EGO

Ego niile bụ na Naira

91.50bn

Ijeri iri itoolu na otu na nde nnarị ise

Mkpokọta mmefu ego nke ugboro ugboro



MMEFU EGO

Ego niile bụ na Naira

106.3bn

Ijeri nnarị na isii na nde nnarị atọ

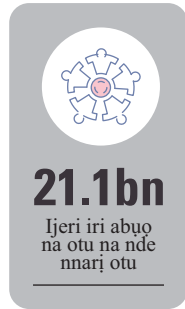
Mkpokọta ego nke ihe arụmarụ



Oke ụgwọ dịrị goṅmenti maka inweta nnukwu ego site n'aka ndị otu mmepe obodo



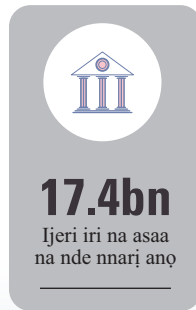
Ulo ozi goṅmenti na-ahụ maka ọrụ mmepe



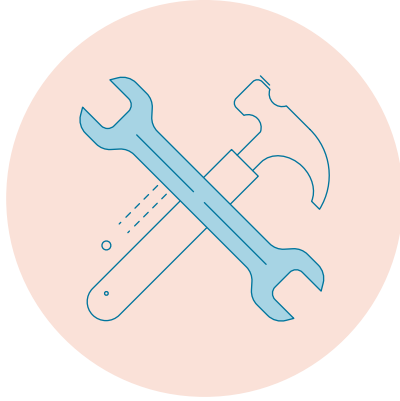
Ulo ozi goṅmenti na-ahụ maka ọdịmma ụmụ amaala



Mpaghara goṅmenti na-ahụ maka akụ na ụba



Izugbe nchikwa goṅmenti



Ndị KACHA MKPA AHỌTARA



MPAGHARA AKU NA ỤBA

Ego niile bụ na Naira



2.0bn

Ijeri abụọ

Okukọ osikapa
maka Imo Steeti nile



650m

Nde nnarị isii na iri ise

Inweta ala na
Ngor-Okpala maka
iru ebe ama ndị agha
elu Najjiria



450m

Nde nnarị anọ na iri ise

Nrughari/Mmezighari
okporo ụzọ bekee gara
Ogwohoroanya-Abutu-
Okirikiri dī n'Umunachi



700m

Nde nnarị asaa

Nrughari/Mmezighari
okporo ụzọ bekee gara
Amanto-Ihite
Owerre-Uzubi-Eke
Obodoukwu



900m

Nde nnarị itoolu

Nrughari/Mmezighari
okporo ụzọ bekee gara
uzọ-mkpị Ahiana na
uzọ-mkpị Okpala



800m

Nde nnarị asatọ

Nrughari/Mmezighari
okporo ụzọ bekee
gara okirikiri dī n'Ulo-
Ngwaahja-Abu-
(Uzọ Sam Mbakwe)



2.3bn

Ijeri abụọ na nde nnarị ato

Nrughari/Mmezighari
okporo ụzọ bekee gara
Owerri-Umuahia
(uzọ mkpị)



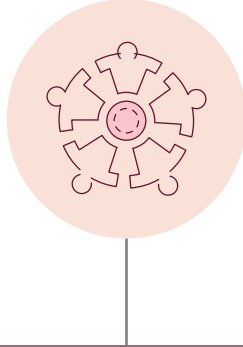
2.4bn

Ijeri abụọ na nde nnarị anọ

Imezighari na Nrughari
Ulo ndi omebe iwu steeti
dī n'Owerri

MPAGHARA ỌDİMMA ỤMỤ AMAALA

Ego niile bụ na Naira



800m
Nde nnarị asatọ

Ụlọ mgbasa
ozi Imo Steeti

100m
Nde nnarị otu

Mbughari/Irụ/Ntinye akurungwa na nnata ikike nke ụlọ akwụkwọ ndị na-elekọta ndị ọrịa, Owerri

600m
Nde nnarị isii

Akurungwa maka ụlọ-ọgwụ isi ahụ-ike dị nnarị otu na iri anọ na asaa

2.0bn
Ijeri abụọ

Ụlọ-ọrụ Imo Steeti na-ahụ maka ọdịmma ụlọ-ọgwụ isi ahụ-ike (ISPHCDA)

Ime ohuru na ntinye akurungwa n'ulo ogwu izugbe

1.3bn

Ijeri otu na nde nnarị atọ

Ụlọ-ogwu nkuzi nke Mahadum Imo Steeti

1.4bn

Ijeri otu na nde nnarị anọ

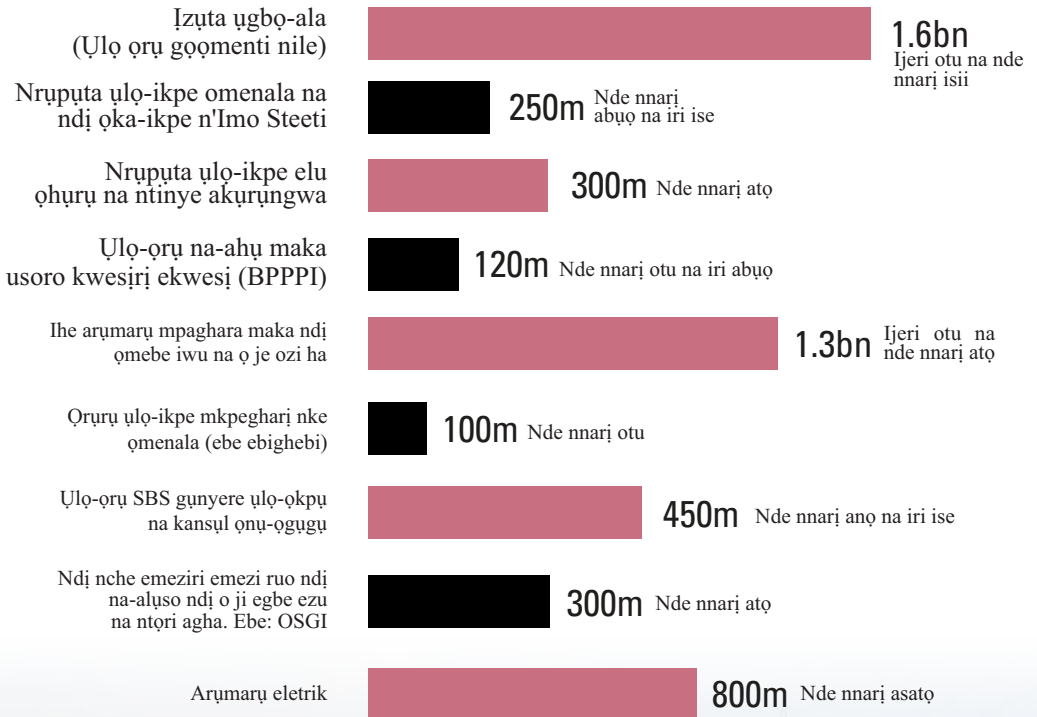
Mmejuputa TVET Imo Steeti

2.0bn

Ijeri abụọ

IZUGBE NCHIKWA GOỌMENTI

Ego niile bụ na Naira



OKE EGO DIRI GOŌMENTI MAKA INWETA ENYEMAKA

Ego niile bụ na Naira



913.9m

Nde nnarị itoolu na iri
na atọ na puku nnarị itoolu

Ụlọ ozi goŋmenti
Naijiria na-ahụ make
okụ eletrik n'ime obodo



200m

Nde nnarị abụọ

Ụlọ ozi goŋmenti Naijiria
na-ahụ maka mbuze na
ngbochi mmiri ide



1bn

Ijeri out

USAID Atụmatụ
mmiri maka mpaghara
Okigwe



1bn

Ijeri out

USAID



288m

Nde nnarị abụọ
na iri asatọ na asatọ

Ụlọ ebe ana-eji ihe
mkpofu emepụta
okụ eletrik



132m

Nde nnarị na iri atọ na abụọ

Ego maka ndị
ụwà na-atụ n'ony

KEDU ETU A GA-ESI MEFUO EGO NKE IHE ARUMARU?

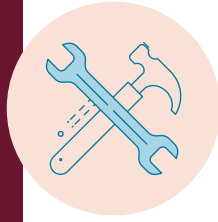
106.3bn

Mkpokota mmefu ego nke ihe arumaru

Works 40.3bn		Agriculture 2.94bn		Housing & Urban Devt. 6.12bn		Commerce 1.01bn			
Environment 1.79bn						Transport 465m		CPC 140bn	
Public Utilities 1.76bn		Lands 6.60bn		ISIPA 200m					
						Gender & Vulnerable Group Affairs 1.40bn		Information & Orientation 1.20bn	
ISPHCDA 2.02bn		Essential Drugs Services 150m		Youth & Social Devt 1.30bn					
Education 6.26bn		Tech Devt 1.01bn		Sports Comm. 1.99bn		Imo Council for Arts & Culture 90m		Oguta Lake 30m	
Finance 2.22bn									

KEDỤ ETU A GA-ESI MEFUO EGO NKE IHE ARUMARU?

Justice 950m	Judiciary High Court 2bn	Law Reform Comm. 40m	Govt House 3.71bn	Judicial Service Comm. 80m
		Head of Service 150m		Legal Aid Council 15.0m
SBS 510m	Auditor General 55m	House of Assembly 1.78bn		Customary Court of Appeal 927m
OSGI 600m	LG Service Comm. 225m	Deputy Gov's Office 750m		House of Assembly Serv. Com 60m
Bureau for LG & Chieftaincy Affairs 620m		Surveyor General's Office 200m		Power Rural Electrification Agency 1.18bn



IHE ARUMARU KACHA DI UMU AMAALA MKPA

Ulo ozi na-ahụ maka ihe gbasara okpuro ọchịchị gọmentị dị iche iche na nke na-ahụ maka akụ na ụba lebara anya na mkpa ndị umu amaala Imo Steeti iji were mara nke dị oke mkpa site na-ime nyocha na ọgbakọ gunyere ndị obodo na ndị ọ gbasara karịa.

Ndị ọ gbasara karịa gunyere ndị Eze, ndị isi obodo, ndị ndu umu ntorobia na ndị ndu umunwanyị, ndị ọchịchị okpuru ọchịchị si n'obodo ọ metụtara. Ọgbakọ a gazuru obodo okpuro ọchịchị niile dị na Imo Steeti bido n'ọnwa asaa wee ruo n'ọnwa itoolu nke afọ puku abụọ na iri na itoolu.

UK DFID mekwaziri nyocha mkpa obodo n'ufodu okpuru ọchịchị nke Steeti.

Nchikota nkwa nke nyocha otu abuo a nyere gọmentị steeti aka imeputa nnukwu ndeko ihe arumarụ kacha wee di mkpa. Ihe arumarụ ndi ahụ kacha mkpa ndi oru gọmentị chọputara bukwa ihe ndi UK DFID chọputara n'onwe ha.

N'ihe nkea, n'ime bojetị afọ puku abuo na iri abuo, o bu ihe arumarụ nnari na iri ato na abuo ka ahoro site na mkpokota ihe arumarụ di nnari ise na iri abuo na ato nke e deoro n'oge nyocha, ebe ihe arumarụ e deputara dika mkpa kachasi ka ana-atu anya na a ga-etinye ma mejuputa ha na bojetị ndi na-abia abia.



THE ARUMARU KACHA DI UMU AMAALA MKPA 2020

S/N	COMMUNITY	LGA	PRIORITY PROJECTS	PROPOSED PROJECT LOCATION	RESPONSIBLE MINISTRY	COST IMPLICATIONS
1	AHIARA	AHIAZU MBAISE	RECONSTRUCTION/REHABILITATION OF ROAD	AHIARA ABA BRANCH - AHIARA JUNCTION ROAD	MINISTRY OF WORKS	800,000,000
2	AHIARA	AHIAZU MBAISE	RECONSTRUCTION/REHABILITATION OF ROAD	AHIARA JUNCTION - OKPALA JUNCTION	MINISTRY OF WORKS	1,000,000,000
3	AMUZI	AHIAZU MBAISE	COMMENCEMENT/EQUIPPING UMUOKISHI VOCATIONAL SCHOOL	AMUZI AHIAZU MBAISE	MINISTRY OF EDUCATION	110,000,000
4	AMUZI	AHIAZU MBAISE	RECONSTRUCTION/REHABILITATION OF ROAD	AMUZI AHIAZU MBAISE-OWUBINUBI-OKPALA AMAKOHIA	MINISTRY OF WORKS	800,000,000
5	AHIAZU MBAISE	AHIAZU MBAISE	AFOR ORU BUILDING AND TIMBER MARKET	AHIAZU MBAISE	MINISTRY OF COMMERCE	5,000,000
6	AHIAZU MBAISE	AHIAZU MBAISE	ESTABLISH OF SCHOOL OF HANDICAPPED	AHIAZU MBAISE	MINISTRY OF EDUCATION	25,000,000
7	EKE NGURU	ABOH MBAISE	RECONSTRUCTION/REHABILITATION OF ROAD	EKE NGURU-IBEKU OKWUATO ROAD	MINISTRY OF WORKS	700,000,000
8	EKE NGURU	ABOH MBAISE	RECONSTRUCTION OF EKE NGURU MODERN MARKET	EKE NGURU	MINISTRY OF COMMERCE	10,000,000
9	EKE NGURU	ABOH MBAISE	RENOVATION OF EKE NGURU ABATTOIR	EKE NGURU ABO MBAISE	MINISTRY OF COMMERCE	5,000,000
10	OKE UVURU	ABOH MBAISE	MAGISTRATE COURT RENOVATION/REROOFING	OKE UVURU	IMO STATE JUDICIARY HIGH COURT	5,000,000
11	UVURU	ABOH MBAISE	RECONSTRUCTION/REHABILITATION OF ROAD	EKEUGIRI MARKET-UMUNUME-UVURU	MINISTRY OF WORKS	200,000,000
12	NKWO MBUTU	ABOH MBAISE	RECONSTRUCTION/REHABILITATION OF ROAD	NKWO MBUTU-NNORIE NGOR OKPALA	MINISTRY OF WORKS	250,000,000
13	ABOH MBAISE	ABOH MBAISE	RECONSTRUCTION/REHABILITATION OF ROAD	ABOH MBAISE-OWUNUBI IKEDURU ROAD	MINISTRY OF WORKS	600,000,000
14	ABOH MBAISE	ABOH MBAISE	UPGRADING OF SCHOOLS OF NURSING/MIDWIFERY	ABOH MBAISE	MINISTRY OF HEALTH	35,000,000
15	ABOH MBAISE	ABOH MBAISE	CONSTRUCTION OF INCINERATORS FOR MEDICAL SOLID WASTE AT THE GENERAL HOSPITAL	ABOH MBAISE, OWERRI & OKIGWE	MINISTRY OF HEALTH	20,000,000
16	ABOH MBAISE	ABOH MBAISE	ESTABLISHMENT/UPGRADE/EQUIPMENT OF ZONAL SPECIALIST HOSPITALS	ABOH MBAISE, AWO OMAMMA, OWERRI & OKIGWE	MINISTRY OF HEALTH	350,000,000
17	ABOH MBAISE	ABOH MBAISE	ESTABLISHMENT OF SCHOOL OF HANDICAPPED	ABOH MBAISE	MINISTRY OF EDUCATION	25,000,000
18	ABOH MBAISE	ABOH MBAISE	ESTABLISHMENT/UPGRADE/EQUIPMENT OF ZONAL SPECIALIST HOSPITALS	ABOH MBAISE	MINISTRY OF HEALTH	116,000,000
19	ABOH MBAISE	ABOH MBAISE	ESTABLISHMENT/ENLARGEMENT OF ALTERNATIVE DISPUTE RESOLUTION CENTER	ABOH MBAISE	MINISTRY OF JUSTICE	10,000,000
20	ABOH MBAISE	ABOH MBAISE	RENOVATION/COMPLETION OF CURT COMPLEX	ABOH MBAISE	MINISTRY OF JUSTICE	12,000,000
21	NAZE	OWERRI NORTH	RECONSTRUCTION/REHABILITATION OF ROAD	NAZE JUNCTION-POLY NEKEDE-IHEAGWA-OBINZE ROAD	MINISTRY OF WORKS	1,800,000,000
22	NAZE	OWERRI NORTH	TIMBER AND ALLIED MARKET	NAZE	MINISTRY OF COMMERCE	5,000,000
23	NAZE/NEKEDE	OWERRI NORHH	IMO MODERN MARKET & TECHNOLOGY VILLAGE	NAZE/NEKEDE	MINISTRY OF COMMERCE	15,000,000
24	NAZE	OWERRI NORTH	SHOE AND ALLIED INDUSTRY	NAZE	MINISTRY OF COMMERCE	50,000,000
25	NAZE	OWERRI NORTH	INDUSTRIAL BUSINESS/INCUBATION CENTRE	NAZE	MINISTRY OF COMMERCE	20,000,000

THE ARUMARU KACHA DI UMU AMAALA MKPA 2020

26	NAZE	OWERRI NORTH	RECONSTRUCTION/REHABILITATION OF ROAD	NAZE-ORIE EBIBIEZENA ROAD	MINISTRY OF WORKS	100,000,000
27	OBIBI	OWERRI NORTH	RECONSTRUCTION/REHABILITATION OF ROAD	OBIBI JUNCTION- AMAEZE-IHEAGWA	MINISTRY OF WORKS	130,000,000
28	UBOWALLA ABOH UZO	OWERRI NORTH	RECONSTRUCTION/REHABILITATION OF ROAD	UBOWALLA ABOH UZO-AGBA ROAD	MINISTRY OF WORKS	100,000,000
29	NIOKU SAWMILL UMUAKALI	OWERRI NORTH	RECONSTRUCTION/REHABILITATION OF ROAD	OLD OWERRI-ABA ROAD/NIOKU SAWMILL UMUAKALI-NAZE	MINISTRY OF WORKS	600,000,000
30	UMUAKALI TENANT ROAD	OWERRI NORTH	RECONSTRUCTION/REHABILITATION OF ROAD	UMUAKALI TENANT ROAD	MINISTRY OF WORKS	10,000,000
31	EMEKUKU	OWERRI NORTH	RECONSTRUCTION/REHABILITATION OF ROAD	EKEMEGBU OHA-IHITTA OGADA-MISSION EMEKUKU	MINISTRY OF WORKS	110,000,000
32	EMEKUKU	OWERRI NORTH	RECONSTRUCTION/REHABILITATION OF ROAD	AZARAEGBELU EMEKUKU-AVUVU-AHIAZU MBAISE	MINISTRY OF WORKS	800,000,000
33	UMUNAHU EMEKUKU	OWERRI NORTH	RECONSTRUCTION/REHABILITATION OF ROAD	UMUNAHU-EMEKUKU-EMII-OWERRI/ABA ROAD JUNCTION	MINISTRY OF WORKS	700,000,000
34	AKWAKUMA	OWERRI NORTH	RECONSTRUCTION/REHABILITATION OF ROAD	AKWAKUMA-UMUNYEAALI-HARDEL JUNCTION ROAD	MINISTRY OF WORKS	550,000,000
35	AMA WIRE EGBU	OWERRI NORTH	RECONSTRUCTION/REHABILITATION OF ROAD	OFF MCC ROAD BY AMA WIRE EGBU ROAD	MINISTRY OF WORKS	250,000,000
36	AMA NWAOUZUZU	OWERRI NORTH	RECONSTRUCTION/REHABILITATION OF ROAD	AMA-NWAOUZUZU-ORIE AMAKOHIA-OGWU MBAISE ROAD	MINISTRY OF WORKS	160,000,000
37	AKWA KUMA HARDEL	OWERRI NORTH	RECONSTRUCTION/REHABILITATION OF ROAD	AKWA KUMA HARDEL JUNCTION ROAD	MINISTRY OF WORKS	400,000,000
38	AWAKA	OWERRI NORTH	PROPOSED NEW MAGISTRATE COURT BUILDING	AWAKA, OWERRI	IMO STATE JUDICIARY HIGH COURT	7,000,000
39	AWAKA	OWERRI NORTH	PROPOSED NEW HIGH COURT BUILDING	AWAKA, OWERRI	IMO STATE JUDICIARY HIGH COURT	7,000,000
40	OFOROLA	OWERRI WEST	CONSTRUCTION OF LINK ROAD	OFOROLA - OBINZE	MINISTRY OF WORKS	100,000,000
41	UMUNGUMA	OWERRI WEST	ESTABLISH A NEW SATELITE WATER SCHEME AT WORLD BANK	UMUNGUMA	IMO STATE WATER CORPORATION	75,000,000
42	EZIAGBAOGU	EZINIHITE MBAISE	EZIAGBAOGU WATER SCHEME	EZIAGBAOGU EZINIHITE MBAISE	IMO STATE WATER CORPORATION	10,000,000
43	EZIUDO	EZINIHITE MBAISE	RECONSTRUCTION/REHABILITATION OF ROAD	EZIUDO-LAGWA-UBOM MBUTU-OBOKWU OZARA	MINISTRY OF WORKS	250,000,000
44	UMUNAMA	EZINIHITE MBAISE	RECONSTRUCTION/REHABILITATION OF ROAD	UMUNAMA-CHOKONEZE ROAD	MINISTRY OF WORKS	400,000,000
45	AMATO	EZINIHITE MBAISE	RECONSTRUCTION/REHABILITATION OF ROAD	AMANTO-IHITTE-OWERRE-UZUBI-EKE-OBODOUKWU ROAD	MINISTRY OF WORKS	800,000,000
46	UMUDIM	IKEDURU	RECONSTRUCTION/REHABILITATION OF ROAD	UMUDIM NEW ROAD-ISIALA MBANO ROAD	MINISTRY OF WORKS	300,000,000
47	AMATTA	IKEDURU	RECONSTRUCTION/REHABILITATION OF ROAD	AMA JOHN-AMATTA-ATTA ROAD	MINISTRY OF WORKS	513,610,436
48	EKE IHO MARKET	IKEDURU	RECONSTRUCTION/REHABILITATION OF ROAD	EKE IHO MARKET-ORIE MBERI ROAD	MINISTRY OF WORKS	150,000,000
49	UMUIHEZIE	IHITTE UBOMA	RECONSTRUCTION/REHABILITATION OF ROAD	UMUIHEZIE-UMUNEAKU OBOM Y JUNCTION ROAD	MINISTRY OF WORKS	250,000,000
50	UMUAWUCHI	IHITTE UBOMA	RECONSTRUCTION/REHABILITATION OF ROAD	UMUAWUCHI-UMUNEMEAKU OBOM Y JUNCTION ROAD	MINISTRY OF WORKS	200,000,000

THE ARUMARU KACHA DI UMU AMAALA MKPA 2020

51	UMUDIBIA	IHITTE UBOMA	RECONSTRUCTION/REHABILITATION OF ROAD	UMUDIBIA-UMUJOMA-AMAINYI ROAD	MINISTRY OF WORKS	100,000,000
52	UMUEZEGWU	IHITTE UBOMA	RECONSTRUCTION/REHABILITATION OF ROAD	EKE-UMUEZEGWU-NKWO ODEKWUME ROAD	MINISTRY OF WORKS	130,000,000
53	UMURIDO	OKIGWE	PROVISION OF TRANSFORMER	UMURIDO OKIGWE	MINISTRY OF COMMERCE, INDUSTRY AND ENTREPRENEURSHIP	500,000
54	EKE OKIGWE	OKIGWE	RECONSTRUCTION OF EKE OKIGWE	EKE OKIGWE	MINISTRY OF COMMERCE, INDUSTRY AND ENTREPRENEURSHIP	5,000,000
55	NDIAWA ARONDIZOGU	OKIGWE	MAGISTRATE COURT RENOVATION/REROOFING	NDIAWA ARONDIZOGU OKIGWE	IMO STATE JUDICIARY HIGH COURT	5,000,000
56	OKIGWE	OKIGWE	REACTIVATION & REHABILITATION OF OKIGWE REGIONAL WATER SCHEME	OKIGWE	IMO STATE WATER CORPORATION, OWERRI	50,000,000
57	OKIGWE	OKIGWE	INTERNATIONAL MARKET (FORMER CATTLE MARKET)	OKIGWE	MINISTRY OF COMMERCE, INDUSTRY AND ENTREPRENEURSHIP	25,000,000
58	OKIGWE	OKIGWE	PROCURE & INSTALL SOLAR POWERED WATER SYSTEM	OKIGWE	IMO STATE WATER CORPORATION, OWERRI	10,000,000
59	OKIGWE	OKIGWE	ESTABLISHMENT/ENLARGEMENT OF ALTERNATIVE DISPUTE RESOLUTION CENTER	OKIGWE	MINISTRY OF JUSTICE	10,000,000
60	AVUTU	OBOWO	RECONSTRUCTION/REHABILITATION OF ROAD	OGWOHOROANYA-AVUTU-UMUNACHI	MINISTRY OF WORKS	450,000,000
61	AMUZI (UMULOWU)	OBOWO	RECONSTRUCTION/REHABILITATION OF ROAD	AMUZI (UMULOWA) - ODENKUME ROAD	MINISTRY OF WORKS	510,000,000
62	OBOWO	OBOWO	MAGISTRATE COURT RENOVATION/REROOFING	OBOWO	IMO STATE JUDICIARY HIGH COURT	5,000,000
63	ACHINGALI	OBOWO	RECONSTRUCTION/REHABILITATION OF ROAD	ACHINGALI-UDO-OBIZI ROAD	MINISTRY OF WORKS	450,000,000
64	EKEAMAINYI	OBOWO	RECONSTRUCTION/REHABILITATION OF ROAD	EKEAMAINYI ROAD - EKEKPA IHITTE ROAD	MINISTRY OF WORKS	436,709,548
65	LOWA	IHITTE UBOMA	CONSTRUCTION OF ROAD	LOWA - ONICHA ROAD	MINISTRY OF WORKS	200,000,000
66	AMAINYI	IHITTE UBOMA	CONSTRUCTION OF ROAD	AMAINYI - UMUNOHIA RING ROAD WITH SPUR	MINISTRY OF WORKS	300,000,000
67	UMUEZEGWU	IHITTE UBOMA	CONSTRUCTION OF 3KM OKPURUKONABIA ROAD, ND, OWERRE	UMUEZEGWU, IHITTE UBOMA	MINISTRY OF COMMERCE	5,000,000
68	ISINWEKE	IHITTE UBOMA	ESTABLISHMENT/ENLARGEMENT OF ALTERNATIVE DISPUTE RESOLUTION CENTER	IHITTE UBOMA	MINISTRY OF JUSTICE	10,000,000
69	ISINWEKE	IHITTE UBOMA	RENOVATION/COMPLETION OF COURT COMPLEX	IHITTE UBOMA	MINISTRY OF JUSTICE	12,000,000
70	NKUME	NJABA	RECONSTRUCTION/REHABILITATION OF ROAD	NKUME-UMUJOWA-ORLU ROAD	MINISTRY OF WORKS	350,000,000
71	MGBIDI	ORU WEST	RECONSTRUCTION/REHABILITATION OF ROAD	MGBIDI-OGUTA (OGUTA LAKE ROAD)	MINISTRY OF WORKS	600,000,000
72	MGBIDI	ORU WEST	HEARTLAND GATEWAY INTERNATIONAL MARKET	MGBIDI	MINISTRY OF COMMERCE	5,000,000
73	MGBIDI	ORU WEST	MGBIDI WATER SCHEME	MGBIDI	IMO STATE WATER CORPORATION, OWERRI	10,000,000
74	UBULU	ORU WEST	PROPOSED NEW MAGISTRATE COURT BUILDING	UBULU, ORU WEST	MINISTRY OF JUSTICE	7,000,000
75	NKWERRE	NKWERRE	RECONSTRUCTION/REHABILITATION OF ROAD	NKWERRE-UMUDIDIKENAFAI ROAD	MINISTRY OF WORKS	452,887,829

THE ARUMARU KACHA DI UMU AMAALA MKPA 2020

75	NKWERRE	NKWERRE	RECONSTRUCTION/REHABILITATION OF ROAD	NKWERRE-UMUDI-DIKENAFAI ROAD	MINISTRY OF WORKS	452,887,829
76	NKWERRE	NKWERRE	EXPANSION OF NYSC PERMANENT ORIENTATION CAMP	EZIAMA OBAIRE NKWERRE	MINISTRY OF YOUTH, SPORT AND SOCIAL DEVELOPMENT	150,000,000
77	NKWERRE	NKWERRE	REHABILITATION OF OLD NYSC CAMP	UMUDI NKWERRE	MINISTRY OF YOUTH, SPORT AND SOCIAL DEVELOPMENT	250,000,000
78	NKWERRE	NKWERRE	MAGISTRATE COURT RENOVATION/REROOFING	NKWERRE	IMO STATE JUDICIARY HIGH COURT	5,000,000
79	EBEIRI	ORLU	REACTIVATION & REHABILITATION OF ORLU WATER SCHEME	EBEIRI ORLU	IMO STATE WATER CORPORATION, OWERRI	25,000,000
80	ELUAMA	ORLU	REACTIVATION & REHABILITATION OF ORLU WATER SCHEME	ELUAMA ORLU	IMO STATE WATER CORPORATION, OWERRI	25,000,000
81	IHIOMA	ORLU	IHIOMA YOUTH DEVELOPMENT CENTER	IHIOMA ORLU	MINISTRY OF YOUTH, SPORT AND SOCIAL DEVELOPMENT	100,000,000
82	ORLU	ORLU	RENOVATION OF CHILDREN'S PARLIAMENT	ORLU	MINISTRY OF GENDER AND VULNERABLE GROUP AFFAIRS	20,000,000
83	ORLU	ORLU	PROCURE & INSTALL SOLAR POWERED WATER SYSTEM	ORLU	IMO STATE WATER CORPORATION, OWERRI	10,000,000
84	ORLU	ORLU	ESTABLISHMENT/ENLARGEMENT OF ALTERNATIVE DISPUTE RESOLUTION CENTER	ORLU	MINISTRY OF JUSTICE	10,000,000
85	ORLU	ORLU	RENOVATION/COMPLETION OF COURT COMPLEX	ORLU	MINISTRY OF JUSTICE	12,000,000
86	ORLU	ORLU	ESTABLISHMENT/UPGRADE/EQUIPMENT OF ZONAL SPECIALIST HOSPITALS	OWERRI, ORLU	MINISTRY OF HEALTH	116,000,000
87	UMUOKIRE OKUKU	OWERRI WEST	ACQUISITION OF LAND FOR NEW CITY ESTABLISHMENT	UMULAKU UMUOKIRE OKUKU	MINISTRY OF LANDS, SURVEY AND PHYSICAL PLANNING	2,000,000
88	EMEABIAM OKOLOCHI	OWERRI WEST	ACQUISITION OF LAND FOR LAND SWAP WITH FUTO	EMEABIAM OKOLOCHI	MINISTRY OF LANDS, SURVEY AND PHYSICAL PLANNING	5,000,000
89	IHIAGWA	OWERRI WEST	MAGISTRATE COURT RENOVATION/REROOFING	IHIAGWA	IMO STATE JUDICIARY HIGH COURT	5,000,000
90	UMUANUNU	OWERRI WEST	RECONSTRUCTION/REHABILITATION OF ROAD	UMUANUNU-AFOR UKWU OBINZE-OFOROTA ROAD	MINISTRY OF WORKS	200,000,000
91	ISIALA MBANO	ISIALA MBANO	PROPOSED NEW MAGISTRATE COURT BUILDING	ISIALA MBANO	IMO STATE JUDICIARY HIGH COURT	7,000,000
92	ISIALA MBANO	ISIALA MBANO	HIGH COURT BUILDING RENOVATION/REROOFING WITH LONG SPAN ALUMINIUM	ISIALA MBANO	IMO STATE JUDICIARY HIGH COURT	6,000,000

THE ARUMARU KACHA DI UMU AMAALA MKPA 2020

93	ISUNJABA	ISU	PROPOSED NEW MAGISTRATE COURT BUILDING	ISUNJABA	IMO STATE JUDICIARY HIGH COURT	7,000,000
94	EHIME MBANO	EHIME MBANO	ESTABLISHMENT OF SCHOOL OF THE BLIND	EHIME MBANO	MINISTRY OF EDUCATION	25,000,000
95	MBIERI	MBAITOLI	CONSTRUCTION OF ACCESS ROAD TO UMUONYEALI INDUSTRIAL MARKET	IBEAFOR UMUNUMO	MINISTRY OF COMMERCE	5,000,000
96	MBIERI	MBAITOLI	MBIERI WATER SCHEME	MBIERI, MBAITOLI	IMO STATE WATER CORPORATION, OWERRI	10,000,000
97	EGBEADA	MBAITOLI	ELECTRIFICATION OF EGBEADA MARKET	EGBEADA, MBAITOLI	MINISTRY OF COMMERCE	3,000,000
98	NGOR OKPALA	NGOR OKPALA	ACQUISITION OF LAND FOR AIRFORCE BASE	NGOR OKPALA	MINISTRY OF LANDS, SURVEY AND PHYSICAL PLANNING	650,000,000
99	NGOR OKPALA	NGOR OKPALA	PROPOSED NEW MAGISTRATE COURT BUILDING	NGOR OKPALA	IMO STATE JUDICIARY HIGH COURT	7,000,000
100	ABOH/NGOR OKPALA	NGOR OKPALA	COMPLETION OF UNIVERSITY OF AGRICULTURAL SCIENCES AND ENVIRONMENTAL SCIENCE	ABOR/NGOR OKPALA	MINISTRY OF EDUCATION	500,000,000
101	UMUNEKE NGOR	NGOR OKPALA	DEVELOPMENT OF DESTITUTE HOME	UMUNEKE NGOR	MINISTRY OF GENDER AND VULNERABLE GROUP AFFAIRS	150,000,000
102	UMUNEKE	NGOR OKPALA	MAGISTRATE COURT RENOVATION/REROOFING	UMUNEKE NGOR	IMO STATE JUDICIARY HIGH COURT	5,000,000
103	LOGARA	NGOR OKPALA	RENOVATION OF STATE REMAND HOME	LOGARA	MINISTRY OF GENDER AND VULNERABLE GROUP AFFAIRS	150,000,000
104	UMUOWA	NGOR OKPALA	IMO CHINA LIGHT INDUSTRIAL PARK	UMUOWA NGOR OKPALA	MINISTRY OF COMMERCE	15,000,000
105	UMUOYE	NGOR OKPALA	RECONSTRUCTION/REHABILITATION OF ROAD	UMUOYE-NKWOALA MARKET UMUOYE ENYIOGUGU	MINISTRY OF WORKS	800,000,000
106	OHAIJ EGBEMA	OHAIJ EGBEMA	IMO INDUSTRIAL PARK	OHAIJ EGBEMA	MINISTRY OF LANDS, SURVEY AND PHYSICAL PLANNING	2,000,000
107	OHAIJ EGBEMA	OHAIJ EGBEMA	CONSTRUCTION OF IMO NIGER DELTA RESCUE MISSION COUNCIL SECRETARIAT	OHAIJ EGBEMA	BUREAU FOR NIGER DELTA AFFAIRS	10,000,000
108	OHAIJ EGBEMA	OHAIJ EGBEMA	CONSTRUCTION OF INFORMATION CENTRE	OHAIJ EGBEMA	BUREAU FOR NIGER DELTA AFFAIRS	30,000,000
109	OHAIJ EGBEMA	OHAIJ EGBEMA	ESTABLISHMENT OF BUREAU FOR NIGER DELTA AFFAIRS FARM PROJECT	OHAIJ EGBEMA	BUREAU FOR NIGER DELTA AFFAIRS	20,000,000
110	EGBEMA	OHAIJ EGBEMA	MAGISTRATE COURT RENOVATION/REROOFING	EGBEMA	IMO STATE JUDICIARY HIGH COURT	5,000,000
111	UMUOKANNE	OHAIJ EGBEMA	PROPOSED NEW MAGISTRATE COURT BUILDING	UMUOKANNE, OHAIJ EGBEMA	IMO STATE JUDICIARY HIGH	7,000,000
112	UMUOKANNE	OHAIJ EGBEMA	MAGISTRATE COURT RENOVATION/REROOFING	UMUOKANNE, OHAIJ EGBEMA	IMO STATE JUDICIARY HIGH	5,000,000

THE ARUMARU KACHA DI UMU AMAALA MKPA 2020

113	UMUJAGWO	OHAI EGBEMA	MAGISTRATE COURT RENOVATION/REROOFING	UMUJAGWO, OHAI EGBEMA	IMO STATE JUDICIARY HIGH COURT	5,000,000
114	OBOSSIMA/AWARA	OHAI EGBEMA	RECONSTRUCTION/REHABILITATION OF ROAD	OBOSSIMA-AWARA ROAD	MINISTRY OF WORKS	400,000,000
115	OGUTA	OGUTA	CONSTRUCTION OF IMO NIGER DELTA RESCUE MISSION COUNCIL SECRETARIAT	OGUTA	BUREAU FOR NIGER DELTA AFFAIRS	10,000,000
116	OGUTA	OGUTA	CONSTRUCTION OF INFORMATION CENTRE	OGUTA	BUREAU FOR NIGER DELTA AFFAIRS	30,000,000
117	OGUTA	OGUTA	ESTABLISHMENT OF BUREAU FOR NIGER DELTA AFFAIRS FARM PROJECT	OGUTA	BUREAU FOR NIGER DELTA AFFAIRS	20,000,000
118	OGUTA	OGUTA	ESTABLISHMENT/ENLARGEMENT OF ALTERNATIVE DISPUTE RESOLUTION CENTER	OGUTA	MINISTRY OF JUSTICE	10,000,000
119	OGUTA	OGUTA	RENOVATION/COMPLETION OF COURT COMPLEX	OGUTA	MINISTRY OF JUSTICE	12,000,000
120	OGUTA	OGUTA	PROPOSED NEW MAGISTRATE COURT BUILDING	OGUTA	IMO STATE JUDICIARY HIGH COURT	7,000,000
121	OGUTA	OGUTA	HIGH COURT BUILDING, RENOVATION/REROOFING WITH LONG SPAN ALUMINIUM	OGUTA	IMO STATE JUDICIARY HIGH COURT	5,000,000
122	IHO	IKEDURU	PROPOSED NEW MAGISTRATE COURT BUILDING	IHO, IKEDURU	IMO STATE JUDICIARY HIGH COURT	7,000,000
123	IHO	IKEDURU	PROPOSED NEW COURT BUILDING	IHO, IKEDURU	IMO STATE JUDICIARY HIGH COURT	7,000,000
124	EZIAMA	IKEDURU	MAGISTRATE COURT RENOVATION/REROOFING	EZIAMA IKEDURU	IMO STATE JUDICIARY HIGH COURT	5,000,000
125	URUALA	IDEATO NORTH	PROPOSED NEW MAGISTRATE COURT BUILDING	URUALA, IDEATO NORTH	IMO STATE JUDICIARY HIGH COURT	7,000,000
126	URUALA	IDEATO NORTH	MAGISTRATE COURT RENOVATION/REROOFING	URUALA, IDEATO NORTH	IMO STATE JUDICIARY HIGH COURT	5,000,000
127	ISIOKPO	IDEATO NORTH	RECONSTRUCTION/REHABILITATION OF ROAD	ISIOKPO-OBODOUKWU-AKPULLU ROAD	MINISTRY OF WORKS	400,000,000
128	ETITI	ORU EAST	HIGH COURT BUILDING, RENOVATION/REROOFING WITH LONG SPAN ALUMINIUM	ETITI, ORU EAST	IMO STATE JUDICIARY HIGH COURT	6,000,000
129	ETITI	ORU EAST	MAGISTRATE COURT RENOVATION/REROOFING	ETITI, ORU EAST	IMO STATE JUDICIARY HIGH COURT	5,000,000
130	AWO OMAMMA	ORU EAST	UPGRADING OF SCHOOL OF NURSING/MIDWIFERY	AWO OMAMMA	MINISTRY OF HEALTH	116,000,000
131	AWO OMAMMA	OKIGWE	ESTABLISHMENT/UPGRADE/EQUIPMENT OF ZONAL SPECIALIST HOSPITALS	AWO OMAMMA, OKIGWE	MINISTRY OF HEALTH	116,000,000
132	DIKENAFAI	IDEATO SOUTH	MAGISTRATE COURT RENOVATION/REROOFING	DIKENAFAI	IMO STATE JUDICIARY HIGH COURT	5,000,000

